



**ELEVATE**

**ATSE**

# 2027 Program Guidelines



Scholarship opening date	Applications for the Elevate program commencing in 2027 open on 1 July 2026.
Closing date and time	<p>Applications for the Elevate program commencing in 2027 must be submitted by 9:00am (AEST) on 1 September 2026.</p> <p>ATSE will not respond to enquiries submitted after 5:00pm (AEST) on 28 August 2026. We recommend anyone seeking guidance or advice for their application submit their questions well in advance of the deadline.</p> <p>You can also sign up to the mailing list to be notified when applications open for future rounds.</p>
Administering entity	Australian Academy of Technological Sciences & Engineering (ATSE)
Enquiries	applications@atse.org.au
Guideline version	2027 Version 1.0



Australian Academy of  
Technological Sciences  
& Engineering

[atse.org.au/elevate](https://atse.org.au/elevate)

Elevate is delivered by the Australian Academy of Technological Sciences & Engineering (ATSE). Its foundational and major investment partner is the Department of Industry, Science and Resources (DISR).

ATSE acknowledges the following valuable partners:





# ELEVATE

ATSE

## Boosting diversity in STEM

### Summary of changes for 2027

Postgraduate and Leadership scholarships will not be available in this round. This applies to those commencing the following degrees in 2027: Doctor of Philosophy, Master of Philosophy, Master by Research, Master by Coursework, Degrees to improve business acumen

Priority disciplines for undergraduate degrees have been reviewed. Please consult the Scholarship eligibility section for a complete list of priority degrees.

## Scholarship Guidelines

### Introduction

These guidelines contain information related to:

- (a) the process of selecting Elevate scholars for the 2027 round for Elevate: Boosting diversity in STEM program ('Elevate')
- (b) the conditions of the award for the Elevate program.

---

It is recommended that applicants read these guidelines before filling out an application. The Academy of Technological Sciences and Engineering (ATSE) will ensure the application process is fair, in accordance with these published guidelines. ATSE will update these Guidelines as required. When this happens, the revised Guidelines will be published at: [atse.org.au/elevate](https://atse.org.au/elevate)

---

This document sets out:

- (a) the Elevate program and scholarship opportunities
- (b) the eligibility requirements and selection criteria
- (c) the process of and timeline for application consideration
- (d) the expectations of scholars engaging in the program

## The Elevate program and scholarship opportunity

ATSE's Elevate: Boosting diversity in STEM program is awarding more than 500 undergraduate and postgraduate scholarships to women and non-binary people in STEM across the duration of the program. The Elevate program provides :

- A scholarship
- Access to skill-building workshops
- Access to peer mentoring and networking events
- Access to 24/7 wellbeing and psychosocial support

### Program aims

The aims of the Elevate program are:

- Elevate women and non-binary people into leadership
- Support women and non-binary people to access and foster industry-academia collaborations
- Equitable and inclusive support for under-represented women and non-binary people to pursue STEM education, careers, growth, sustainability and effective delivery.

### Core principles and values of the program

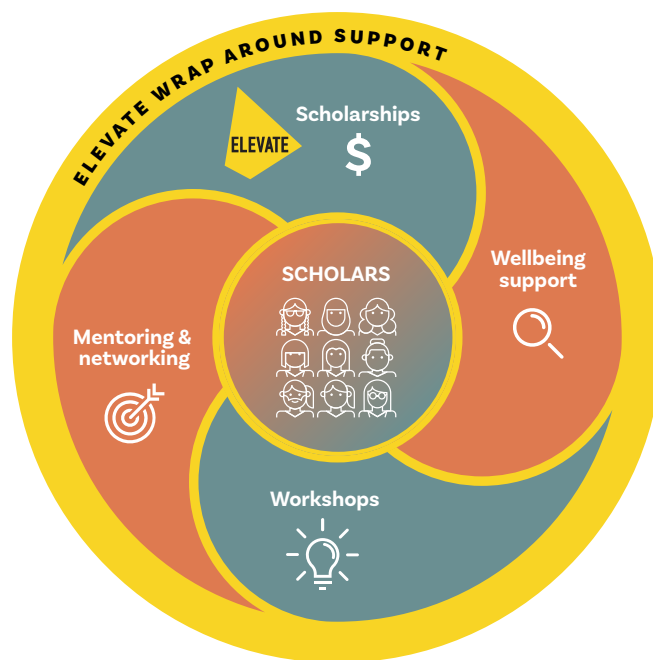
The core principles of the Elevate program are led by the program objectives set by the Department of Industry, Science and Resources (DISR). Implementation of the program incorporate's ATSE's values, including:

- Integrity and transparency
- Inclusion
- Collaboration
- Excellence and independence
- Sustainability
- Professional pride

Elevate is funded by DISR through the Australian Government's \$41.2 million "Boosting the Next Generation of Women in STEM" fund, with additional scholarship funding available through the Department of Defence, Commonwealth Bank, AirTrunk, Snowy Hydro Ltd and philanthropic support.

### Number of Scholarships

The number of scholarships awarded each year may vary and is at the discretion of ATSE, in consultation with DISR and other funding partners. There will be more than 500 scholarships awarded during the program for study at an Australian university to gain, extend, or build on STEM education and qualifications.



## Eligibility requirements and selection criteria

### Eligibility

To be considered for an Elevate program scholarship applicants must meet these three eligibility criteria:

#### 1. Identify as a woman or non-binary person

- The purpose of this scholarship is to support individuals who identify as a woman or non-binary person in STEM. All applicants must identify as a woman or non-binary person or may refer to themselves using a different term.
- While the term non-binary is regularly used to include all people who do not identify as a man or woman, ATSE acknowledges that this term may not describe your own gender identity, and therefore, you are welcome to nominate a different term.

#### 2. Be enrolling as a domestic student at an Australian university

- Applicants must be planning to study at an [Australian university](#).
- Generally, domestic students are either an Australian Citizen, a New Zealand Citizen, or a person entitled to enter and stay in Australia without any limitation of time (such as Australian permanent residents, or Australian permanent humanitarian visa holders)
- To be eligible for the Elevate program, all applicants must be able to enrol as a domestic student at their university.
- Please check the requirements of the university you are applying for to determine if you are eligible to enrol as a domestic student.

International students are not eligible to apply for the Elevate program.

#### 3. Be planning to undertake an eligible undergraduate STEM degree commencing in 2027

- Applicants must be commencing a new degree in 2027
- Applicants must be planning to commence an eligible STEM undergraduate bachelor's degree

If you meet the eligibility criteria, you will be assessed by the selection criteria as described below.



## Selection criteria

Applicant questions/criteria	Max word count	Weighting
<p><b>Please tell us your personal story</b></p> <p>Your story will help us understand why you are a suitable candidate for the Elevate program.</p> <p>Tell us about your passion for STEM subjects and curiosity to explore the world.</p> <p>Tell us about opportunities, challenges or barriers you have encountered that have impacted your aspirations to study a STEM degree and/or pursue a STEM career. What have you done to overcome these challenges?</p> <p>This question will help assessors understand your context and experiences.</p>	250	10%
<p><b>What are the benefits of your participation in the Elevate Program?</b></p> <p>Consider the broader benefits of your participation in the program, including various program activities and beyond the financial support. This could include benefits:</p> <ul style="list-style-type: none"> <li>• at a personal, academic and/or professional level</li> <li>• for your wider community, if relevant.</li> </ul>	300	40%
<p><b>Why are you interested in your chosen course of study? Please answer from a personal and/or professional perspective.</b></p> <p>How and when did you realise your particular interest in the chosen course of study?</p> <p>How does this course fit well with your strengths? When talking about your strengths, you may think about how your lived experience, research experience, your social networks and skills, capability and ambition would support you to successfully complete this course. Academic performance could be a strength for you, but it is not a requirement that you refer to it.</p> <p>Consider how your course or discipline of study relates to the priority disciplines for the program.</p>	300	40%
<p><b>What is your potential impact on the broader STEM sector?</b></p> <p>Where do you see yourself personally and professionally by the time you graduate? How will a degree in your chosen course of study help you to grow and achieve this personal and professional aspiration?</p>	150	10%

To increase accessibility to STEM-related studies, the Committee will also consider the STEM discipline and historically underrepresented groups. If applications are scored the same, or where the number of suitable applications is greater than the available funding, the Committee will consider alignment to the objectives, and how the scholarships will target diverse communities and groups historically underrepresented in STEM.



## Scholarship categories and eligibility

To receive an Elevate scholarship in 2027, applicants must have an intention to study an undergraduate STEM degree at an Australian university. Eligible STEM degrees include most degrees focusing on science, technology, engineering or mathematics, administered by a STEM School or Faculty, e.g. Faculty of Engineering. Degrees with limited gender diversity will be prioritised, e.g. Bachelor of Engineering. Degrees with strong female and non-binary representation are ineligible this year due to the limited number of scholarships available.

### Examples of ineligible STEM degrees

Degrees administered by non-STEM faculties  
eg: Faculty of Arts

Degrees that qualify an individual for a specific occupation  
Medicine and Surgery  
Nursing and Midwifery  
Veterinary medicine, Veterinary science

Health science and clinical degrees  
Audiology  
Psychology  
Dentistry, Dental Science, Dental Surgery  
Health science  
Medical science  
Nutrition and Dietetics  
Occupational Therapy  
Optometry  
Public Health  
Pharmacy  
Physiotherapy  
Radiography, Sonography, Medical Imaging

Life science degrees  
Biology  
Biomedical science  
Genetics  
Neuroscience  
Pharmacology  
Zoology

Please note that this is not an exhaustive list. If you are unsure whether your preferred degree is eligible, please contact ATSE for advice. Determination of degree eligibility is at ATSE's discretion.

### Undergraduate priority disciplines

Priority disciplines were identified through the Elevate program consultation, and reflect areas of study and work in which women and non-binary people are underrepresented. These include:

**Science** – Priority given to physical sciences including chemistry and physics, space sciences, environmental science including water science, and materials science.

**Technology** – All disciplines, with priority given to robotics, software development, artificial intelligence, machine learning and advanced manufacturing.

**Engineering** – All disciplines, with priority given to nuclear engineering, materials engineering, mechanical engineering, software engineering, civil engineering, mechatronics engineering and electrical engineering.

**Mathematics** – All disciplines

All applicants are encouraged to email [applications@atse.org.au](mailto:applications@atse.org.au) if they are unsure if their course of study is eligible for an Elevate scholarship.



## Ineligible individuals

Anyone who is currently studying is ineligible for an Elevate scholarship for their current degree. If an individual chooses to commence a new degree and continues to meet the eligibility criteria, ATSE would be delighted to receive their application in the future.

Staff members of ATSE and their immediate family members are ineligible to apply for an Elevate scholarship. The leadership teams of Elevate partner organisations are also ineligible to apply.

## University of choice

Scholars will be supported to study at any Australian university that offers a relevant course and commits to the principles of the program. To be eligible for the program, scholars must be studying at an Australian university campus based in Australia. Scholarships will be awarded directly to the successful applicant: an individual. No scholarship will be awarded to an organisation.

We encourage applicants to investigate in-person study options where possible, to build a supportive community and study environment. However, we appreciate that some applicants' circumstances and the nature of the course means online study is a more viable option.

A list of Australian universities can be found on the [studyaustralia.gov.au](http://studyaustralia.gov.au) website.

## Degree structure

### Double degrees

Provided one degree is an eligible degree, applicants who are planning to undertake double degrees are eligible. Scholarship funding will be provided for the maximum duration for the scholarship, even if the length of study extends beyond this period. It is expected that the Elevate scholar is enrolled and completing STEM courses throughout the duration of their scholarship. If a scholar defers and does not resume their eligible degree, the Elevate scholarship will be terminated.

### Combined degrees

Combined degrees, such as vertical double degrees for an undergraduate and postgraduate study combination, are eligible. Scholarship funding will be provided for a maximum of four years, even if the vertical double degree extends beyond this period.

### Single-year Honours degrees

Single-year Honours degrees are ineligible.



## Process and timeline for application consideration

The deadline for applications for the Elevate program commencing in 2027 is 9:00am (AEST) 1 September 2026. Any applications received after this deadline will not be considered for assessment.

ATSE strongly encourages applicants to start the application process early. The portal saves the progress of the application and applicants can return to their application at any time.

ATSE will not respond to enquiries submitted after 5:00pm (AEST) on 28 August 2026. We recommend anyone seeking guidance or advice for their applications submit their questions in advance of the deadline.

### Timeline for study beginning in 2027

Applications opened	Wednesday 1 July 2026
Deadline for 2027 consideration	9:00am AEST, 1 September 2026
Assessment period	September & October 2026
Scholarships announced	November 2026
Scholarships commence	January 2027

## Diversity and inclusion

Diversity and inclusion considerations, and consideration of career disruptions and achievements relative to opportunity, will guide the selection process. Applicants will be given the option to share how they identify and their individual journey and circumstances. All applicants will be considered for scholarships even if they choose not to disclose how they identify.

Applicants will be asked if they identify with the following:

- Aboriginal and/or Torres Strait Islander
- From a regional, rural or remote area
- Belonging to the LGBTQIA+ community
- First in their family to attend university
- From a culturally and/or linguistically diverse background
- From a culturally and/or racially marginalised background
- From a low-socioeconomic background
- Have caring responsibilities (e.g. children, special needs, disability, medical, aged care)
- Recent or first-generation migrants to Australia, including refugees
- Living with disability
- Neurodiverse
- Person of colour
- Returning to education and/or work after a significant period away



## Assessment and selection process

All applications will be assessed for eligibility. Those that are eligible will be assessed by an expert selection committee consisting of STEM leaders with diverse backgrounds and lived experiences who are representative of the STEM ecosystem. The panel will review the applicants' deidentified responses to long-response questions in the application form and how their discipline of study aligns to the priority disciplines.

The selection committee will be responsible for selecting a cohort of successful applicants using a combination of weighted scores, diversity and inclusion considerations (across the cohort), and priority disciplines.

Applications from Aboriginal and Torres Strait Islander applicants are strongly encouraged.

Assessors will consider applications and applicants' stories and achievements relative to the opportunities they have received to date, as well as consider the impact of any challenges or access (or relative inaccessibility) to opportunities. Applicants are not required to have a strong academic record of achievement.

## Awarding of Scholarships

Successful applicants will be notified from mid-November for study commencing in 2027. The duration of the scholarship will be for the maximum duration of the course, or for up to four years (or full-time equivalent), whichever is shorter. This will be offered pro-rata for part-time scholars. Elevate scholars must commence study prior to 31 July 2027.

Scholarships supported by industry partners may be awarded to applicants studying specific eligible degrees. These scholarships may also present additional opportunities provided by the industry partners.

Scholarships cannot be deferred to a future year. Scholars who choose to not take up their scholarship can apply for an Elevate scholarship in a future year, however, a scholarship offer one year does not guarantee a scholar will be found suitable in a subsequent year.

If an applicant is unsuccessful, they are welcome to apply in a subsequent year, provided they continue to meet the eligibility criteria. Applicants will be able to access their previous applications in the system, but they will not be automatically considered for subsequent years, as unsuccessful applications will be archived following the outcome notification.

Due to the high volume of applications received, individual written feedback for the unsuccessful applicants will not be provided and decisions are final. Any feedback on individual applications will be limited to scores against assessment criteria. A summary of the common elements of successful applications is available on the ATSE website.

Permission will be sought to contact all applicants within 12 months of the application closing date, to participate in an evaluation and for ATSE to advise when the next round of applications will open



## Expectations of Scholars

- Be enrolled in an eligible STEM degree as a domestic student at an Australian university.
- Identify as a woman or non-binary person.
- Provide a university letter of offer or proof of application to study at your preferred university by 31 January 2027.
- Provide proof of university enrolment in order to commence payments.
- Commence studying prior to 31 July 2027. Scholarships cannot be deferred to a later year.
- Remain in good standing in terms of your academic record for the duration of your scholarship.
- Provide evidence of enrolment in an eligible degree annually or upon request.
- Permit ATSE to make inquiries directly to universities pertaining to eligibility for this scholarship.
- Complete all compulsory quarterly check-ins.
- Promptly inform ATSE if you wish to change or defer your enrolment, e.g. changing your enrolment such that it reduces or extends your degree or transferring to a new degree.
- Acknowledge your Elevate scholarship when publicly presenting or publishing your work (if applicable).
- Commit to engage in offerings made available to you as part of the Elevate program
- Attest there has been no serious disciplinary action taken against you in response to a substantiated finding of workplace harassment (including sexual harassment), discrimination and/or bullying.
- Read and adhere to the ATSE Code of Conduct
- Where applicable, you will be responsible for your own travel and accommodation arrangements.

## Enquiries and Feedback

For further information or clarification, or to provide feedback on the process, you can contact ATSE on 02 6185 3240 or [applications@atse.org.au](mailto:applications@atse.org.au).

If you have a complaint, call us on 02 6185 3240. We will refer your complaint to the appropriate manager. If you are not satisfied with the way we handle your complaint, you can contact:

Manager  
Internal and Design, Business Grants Hub  
Department of Industry, Science, and Resources  
[IAScience@industry.gov.au](mailto:IAScience@industry.gov.au)  
GPO Box 2013  
CANBERRA ACT 2601



## Study load

For the purposes of the scholarship, the recognition of a part-time or full-time load will be determined by the eligible provider of the eligible course of study (the university). Scholars who are considered eligible for part-time scholarships will receive 50% of the payment each quarter for up to double the length of the scholarship category duration. The amount of the scholarship will not exceed the total amount allowable for any scholarship: \$40,000.00 for an undergraduate scholarship. Scholars will receive payments each quarter while they are enrolled in an eligible degree, up to the maximum duration of their scholarship, even if their period of study surpasses that timeframe.

Scholars wishing to make amendments to their study patterns must provide a written request of study pattern alteration in advance of any changes to study load. Part-time scholars considering a transition to full-time studies will be permitted (confirmation is required from the university in writing prior to adjusting a payment schedule) and full-time scholars looking to transfer to part-time will be considered on a case-by-case basis. If a scholar commences part-time study without prior agreement, their scholarship may be revoked, at the discretion of ATSE.

## Change of degree

If the scholar changes course of study without notice to ATSE, or if a scholar changes to a course that is not aligned with the eligibility criteria for the scholarship, the scholar will become ineligible for their scholarship, starting from the semester in which the change of course is made.

If a scholar discontinues the course(s) that makes them eligible during a semester, they will not be eligible for scholarship funding for that semester. If a scholar's course of study changes but still meets the scholarship eligibility criteria, they will be required to provide written evidence of continuing eligibility, to continue to receive scholarship payments. The maximum four years of scholarship funding will not be extended.

## Failure to complete courses

If a scholar does not successfully complete all their courses within the usual anticipated timeframe, scholars will have the opportunity to extend their degree. However, the duration of the scholarship will not be extended to account for additional periods of study. Scholars will be encouraged to access their institution's support pathways.

Scholars who do not meet the basic completion requirements of their courses for a second semester in a row may have their scholarship revoked unless evidence of extenuating circumstances can be provided.

## Termination of scholarship

Scholars may terminate their scholarship with written notice to ATSE. Scholars who become ineligible during their scholarship by withdrawing from their degree or transferring into an ineligible degree will have their scholarship terminated. Scholars who withdraw from their studies may be required to repay part of their scholarship, at the discretion of ATSE. Upon withdrawal, scholars will be issued with a Termination of Agreement letter acknowledging the withdrawal of their scholarship.



## Leave of absence

Scholars wishing to suspend study for up to six months will be invited to submit a compelling case providing their intention to continue their studies following the leave of absence. Further extensions to the existing leave of absence will be considered on a case-by-case basis. Examples could include caring responsibilities, health considerations or cultural commitments. Information regarding Leave of Absence will be held in confidence.

No scholarship payments are made while leave of absence arrangements are in place. If the scholar does not resume their studies after a period of suspension, the scholarship may be revoked and the withdrawal from study advice will apply.

No Elevate scholarship can be suspended in a scholar's first semester of study.

## Program engagement

Scholars are expected to engage with the aspects of the scholarship program that are offered in addition to the funding, such as peer-mentoring, networking, and skill-building workshops. The Elevate program will include opportunities for networking with other scholars and Elevate partner contacts, events delivered by the program's partner organisations, internal training opportunities, and ad hoc engagements for relevant groups of scholars.

Scholars will be asked if they consent to share their photograph, biography, and social media handles as part of their participation in the program, to assist with the promotion of the scholarships and to raise the profile of scholars. Providing this information is not compulsory, and prior experience is not a criterion for selection. Scholars will also be asked to commit to being a champion of the program and be available for contact for two years after the conclusion of their scholarship. This information and commitments will be requested of the successful applicants on award of their scholarship.

## Reporting

Scholars are required to complete all compulsory check-ins as a condition of their participation in the Elevate program to support reporting and to ensure the program continues to meet scholars' needs. This will include a minimum of four check-ins per year, once per quarter. Submitting quarterly check-ins is a requirement to receive the next quarterly allocation of scholarship funding. In addition to the compulsory quarterly check-ins, program surveys and reflections are provided from time to time. These surveys will include questions on scholars' study progress, wellbeing and sense of belonging, and the wins and goals of scholars. While these surveys are not compulsory, they enable ATSE to understand the needs of scholars, and to support program improvements.

## Interaction with other scholarships

Scholars may hold other scholarships in addition to the Elevate scholarship. However, it is the responsibility of an Elevate scholar to ensure that they are eligible for any other scholarship they hold concurrently, and that the Elevate scholarship will not impact on or contradict eligibility for another scholarship. Applicants with existing scholarships are strongly encouraged to contact their university's scholarships office to understand the implications of holding another scholarship in addition to the Elevate scholarship.



## Scholarship payment structure

Pre-study payment	Quarterly rate (full-time)	Quarterly rate (part-time)	Maximum duration (full-time)	Maximum amount
\$5,000	\$2,187.50	\$1,093.75	Up to 4 years	\$40,000

Scholars will receive a \$5,000.00 payment in advance of the commencement of their first semester of study, after all required documentation and proof of enrolment has been received by ATSE. This payment is designed to help with relocation and initial study costs.

Subsequent payments will be made quarterly, following completion of the previous quarter's check-in and provided the scholar remains eligible for the scholarship. Payments will only be made while the scholar is enrolled in an eligible degree.

Eligible expenditure for the Elevate scholarship includes living, study and travel-related expenses. Examples could include university fees, course fees, textbooks, living expenses, relocation expenses and other expenses the scholar feels are necessary to assist them with their studies (for example, healthcare, childcare, digital technologies, or transportation). Scholars will not be asked to acquit receipts for their spending; however, they will be requested to provide a written overview of how the funding has assisted with their studies.

It is the scholar's sole responsibility to self-assess their own tax position and seek tax advice in relation to the scholarship agreement. The Elevate program team and ATSE are unable to provide tax advice for scholars and cannot withhold tax from scholarships. ATSE strongly recommends that scholars seek professional advice as to whether they should declare their scholarship as taxable income. It is recommended scholars visit the Australian Taxation Office website to find out whether their scholarship is taxable. Additionally, some universities offer free tax advice through the National Tax Clinic program.

## Probity, privacy, confidential information

The Australian Academy of Technological Sciences and Engineering Ltd is committed to protecting the privacy of applicants' personal information.

ATSE is required by the Privacy Act 1988 (Cth) (Privacy Act) to comply with the Australian Privacy Principles (APP) (subject to other provisions of the Privacy Act). The APPs regulate the way personal information is handled throughout its life cycle, from collection to use and disclosure, storage, accessibility, and disposal. ATSE has its Privacy Policy available on our website and can also provide a hard copy version upon request. If applicants would like more information or a hard copy of the privacy policy, please contact ATSE's Privacy Officer on 02 6285 3240 or [info@atse.org.au](mailto:info@atse.org.au).

Or write to us:  
Privacy Officer  
Australian Academy of Technological Sciences and Engineering  
Level 2, 28 National Circuit  
Forrest ACT 2603



## **ATSE Code of Conduct**

The Australian Academy of Technological Sciences and Engineering (ATSE) Code of Conduct is foundational to our commitment to leading a positive and ethical culture in which all persons treat each other with respect. ATSE's Fellows, employees, workers and participants agree to conduct themselves with respect, integrity, transparency, inclusion, collaboration, excellence and independence. We agree to treat each other respectfully, responsibly and ethically, and are guided in all our activities by the highest standards of honesty and integrity. When acting in relation to ATSE, Fellows, employees, workers and participants are expected to behave as exemplars for the applied science, engineering and technology sectors.

## **Questions during the application process**

Please direct any questions during the application period to ATSE and we will endeavour to respond within three working days. ATSE will not respond to enquiries submitted after 5:00pm (AEST) on 28 August 2026. We recommend anyone seeking guidance or advice for their applications submit their questions in advance of the deadline.

**[applications@atse.org.au](mailto:applications@atse.org.au)**





Australian Academy of  
Technological Sciences  
& Engineering

[atse.org.au/elevate](http://atse.org.au/elevate)

Elevate is administered on behalf of DISR by ATSE, the  
Australian Academy of Technological Sciences & Engineering



Australian Government  
Department of Industry,  
Science and Resources



Australian Government  
Defence



Commonwealth  
Bank



AIRTRUNK

snowyhydro

ATSE acknowledges the following founding collaborators



Cooperative  
Research  
Australia



CICADA  
INNOVATIONS

FB RICE



AUSTRALIAN  
TECHNOLOGY  
NETWORK  
OF UNIVERSITIES



INDIGITEK

WILD | WOMEN IN  
LEADERSHIP  
DEVELOPMENT





Elevate is an initiative of the Australian Academy  
of Technological Sciences & Engineering

[atse.org.au/elevate](http://atse.org.au/elevate)