

EMERGING LEADERS NETWORK



What is the Emerging Leaders Network?

The Australian Academy of Technological Sciences and Engineering (ATSE) Emerging Leaders Network has been established to support high-potential rising professionals in STEM. The Network aims to enhance the contribution of rising professionals in STEM by providing opportunities to work alongside esteemed scholars and industry leaders, develop leadership skills and contribute to practical thinking to address pressing challenges.

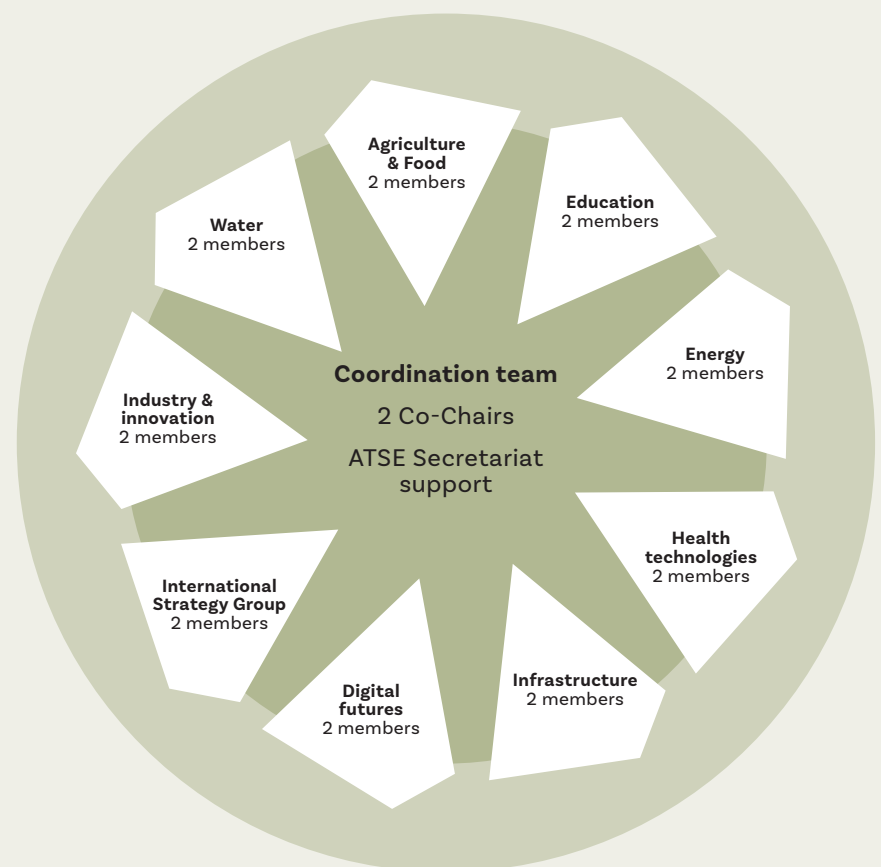
The Network is designed to foster the growth and development of upcoming professionals between the ages of 25 and 40 who have demonstrated leadership potential and a keen interest in policy and advocacy. The Network provides a platform for members to actively contribute to ATSE's policy forums and the International Strategy Group, and engage in evidence-based decision-making. Through participating in the Network, members have the opportunity to expand their professional networks across the breadth of Australian STEM leadership.

EMERGING LEADERS NETWORK

A stem careers initiative from the Australian Academy of Technological Sciences & Engineering

Structure of the Network

The Network comprises up to 20 members, with up to two emerging leaders joining each of ATSE's nine policy forums and the International Strategy Group. The Network operates under the guidance of two elected co-chairs, who facilitate effective communication and engagement among members and the ATSE professional staff.



Strategy and support

Strategic directions and high-level support will come from the ATSE CEO, the Director, Policy and International Affairs, the Director, STEM Careers, and the Policy Steering Group.

ATSE's policy Forums and the International Strategy Group



Emerging Leaders Network members will actively participate in the activities of an assigned Forum or the International Strategy Group.

ATSE's policy Forums – Agriculture and Food, Digital Futures, Education, Energy, Health and Medical Technology, Industry and Innovation, Infrastructure, Mineral Resources, and Water – play a crucial role in advancing ATSE's strategic priorities and shaping evidence-based positions and advice to influence policymakers and the public.

ATSE's International Strategy Group (ISG) ensures that ATSE's international activities and engagements are aligned with ATSE's Strategic Plan, and set and steward the Academy's international strategy. The ISG is comprised of ATSE Fellows who have been actively engaged internationally in applied sciences, technology and engineering.

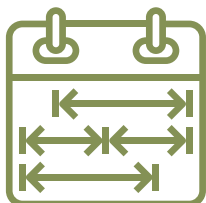
Forums hold quarterly leadership group meetings as well as full-Forum annual virtual meetings, and identify annual priorities aligned with ATSE's strategic agenda. They actively contribute to policy artifacts and play a pivotal role in the strategic consideration of all ATSE policy project proposals through the Forum leadership group and Policy Steering Group.

The ISG meets quarterly, works with ATSE's Forums on key policy matters, and guides ATSE's delivery of international programs that drive Australian collaboration and engagement internationally.

Emerging Leaders Network activities

In addition to participating in the work and activities of assigned Forums or the ISG, the Network will meet as a group on a quarterly basis. These meetings will serve as a platform to facilitate the exchange of ideas, provide peer support, and encourage an interdisciplinary approach to supporting decision- and policymaking through evidence-based advice.

Members will also be supported by a Fellow mentor who will provide ongoing support and guidance. Mentors will be encouraged to act as sponsors for members within the ATSE network. Members may also be offered additional professional development and networking opportunities.



Time commitments

Being a Network member requires a commitment to actively participate in meetings, mentoring, workshops, and events as communicated by the ATSE Secretariat. Members should be willing to commit an average of five (5) hours per month to participating in the Network activities. Additional time commitment may be required for participation in professional development and networking opportunities.

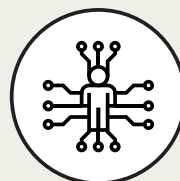
Benefits



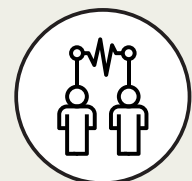
Work and learn alongside established experts and industry professionals within ATSE's Fellowship.



Engage with policy Forums and the ISG to contribute unique perspectives to evidence-based decision-making.



Undertake professional development and participate in networking opportunities.



Receive mentoring from an ATSE Fellow.

If you have any further questions, please contact emergingleaders@atse.org.au



Australian Academy of
Technological Sciences
& Engineering

atse.org.au/emerging-leaders-network