



Australian Academy of Technological Sciences & Engineering



The future strength of the NSW economy will be built on the foundation of technology and innovation.

The state faces rising energy costs, skills shortages in key industries, falling education outcomes and a health care system that is both stretched and fatigued.

Now, more than ever, NSW is looking to its leaders to outline a vision for how they will address the state's challenges and make the next decades the most prosperous in the state's history.

The Australian Academy of Technological Sciences and Engineering (ATSE) stands ready to leverage the collective talents of our Fellows – some 250 internationally recognised experts based in NSW, and more than 900 experts across the nation – to support those seeking to lead this state to achieve the best outcomes for the people of NSW.

ATSE provides impartial, evidence-based advice on applied science, technology and engineering, and how to leverage these to solve existing and emerging challenges.

We encourage all candidates to engage with ATSE on the issues listed here and work with us to build fairer and more prosperous NSW.



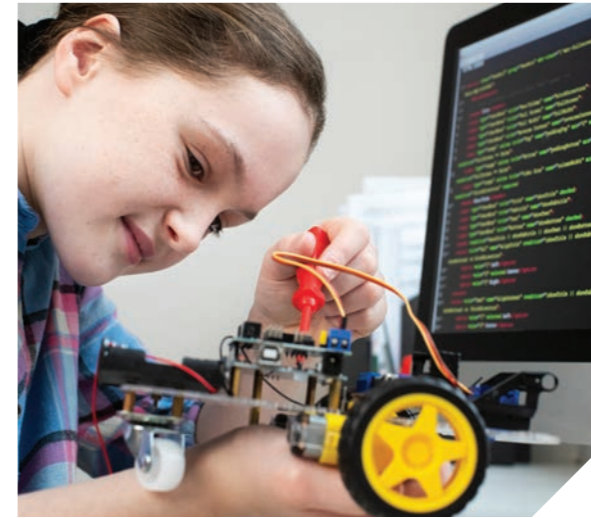
Energy & Environment

Adopt an evidence-based, technology neutral, approach to zero-carbon energy production which meets the state's growing energy needs.

Use regional hubs to co-locate energy-intensive industries with renewable energy sources.

Use sustainable water practices to grow NSW's agricultural sector, including secondary industries.

Protect native flora and fauna from habitat loss and the impacts of climate change.



Education & Workforce

Fund all schools at 100% of the Schools Resourcing Standard

Ensure all students have access to in-field teachers in STEM areas especially in regional NSW by increasing targeted training, support and incentives.

Develop and implement a strategy which creates a seamless tertiary education sector that includes universities and VET

Support programs which provide hands on experience to students in engineering like STELR (Science and Technology Education Leveraging Relevance) program.

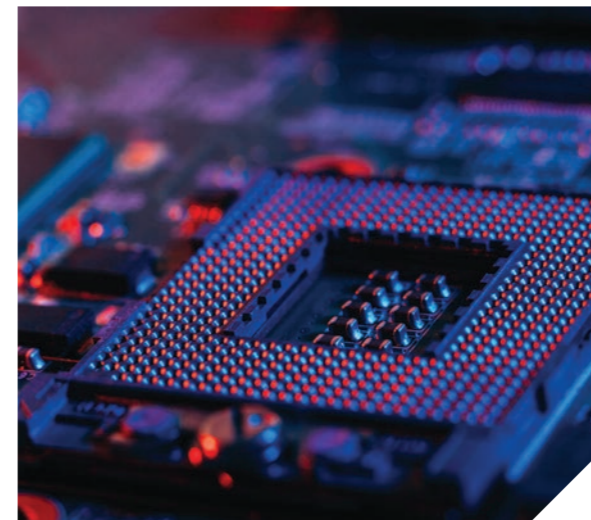


Urban Planning & Infrastructure

Legislate new energy use and efficiency standards for new and existing buildings and industrial processes to reduce energy requirements.

Invest in infrastructure that is resilient to natural disasters, technological changes and cyber-attacks.

Reduce carbon emissions from passenger vehicles by expanding public transport and electric vehicle charging networks.



Research & Development

Support research collaborations that elevate Aboriginal and Torres Strait Islander perspectives, experiences and expertise.

Expand support for collaboration between research and industry, including in research strengths such as quantum and mRNA.



Health

Invest in expanding the availability of telehealth services to ensure equitable access to healthcare for those who cannot get to a doctor.

Design our farms, hospitals, and other high-risk settings to prevent the spread and growth of antimicrobial resistant organisms through deployment of antimicrobial surfaces, air sterilisation.